



NOAA
WEATHER
PROGRAM OFFICE



NOAA
WEATHER
PROGRAM OFFICE

January 27, 2023

Activity Area 4: Effective Communication and Coordination of Weather Research

Dr. Castle Williamsberg, Social Science R2X Coordinator





Activity Area 4: Effective Communication and Coordination of Weather Research

The Weather Program Office seeks recommendations regarding our mechanisms for cross-line office communication, coordination, and collaboration with internal & external stakeholders throughout the Weather Enterprise.

The WPO activities included in this area are:



Supplemental Appropriations

WPO provides 360° coordination of the planning, budget execution, monitoring, reporting, and communication of projects funded by supplemental appropriations.



Social Science Program

WPO funds research that plays a critical role in connecting the improvements of NOAA's weather forecast information to the public's growing forecast needs.



Policy, Partnerships & Communications

WPO embraces its role at the nexus of weather policy and R&D, through purposeful collaborations and partnerships, while helping to bridge gaps across the Weather Enterprise.

AUTHORIZATION VS. APPROPRIATION

Authorization is Congress saying that money **can** be spent on a given item—not that it necessarily **will** be spent on that item. *Appropriations*, on the other hand, are done by Congress via legislation that authorizes agencies to make payments from the Federal Treasury.



Authorization

- Gives NOAA authority or mandates for specific activities
- Can authorize funding for an activity



Appropriation

- Funds Federal agencies
- Can give very specific directives for the use of funds appropriated



WHAT ARE SUPPLEMENTAL APPROPRIATIONS?

A **supplemental appropriation** occurs outside of the annual appropriation, and is intended to address urgent needs.

As a result of increasing natural disasters, supplemental appropriations have also increased. A driver for WPO involvement with supplemental appropriations is high impact weather events and the related emergencies that arise involving:

- (1) **the safety of human life**
- (2) **the protection of property**

2021 U.S. Billion Dollar Disasters

4

Tropical Cyclones

2

Flood Events

1

Wildfire Event

8

Severe Weather Events

3

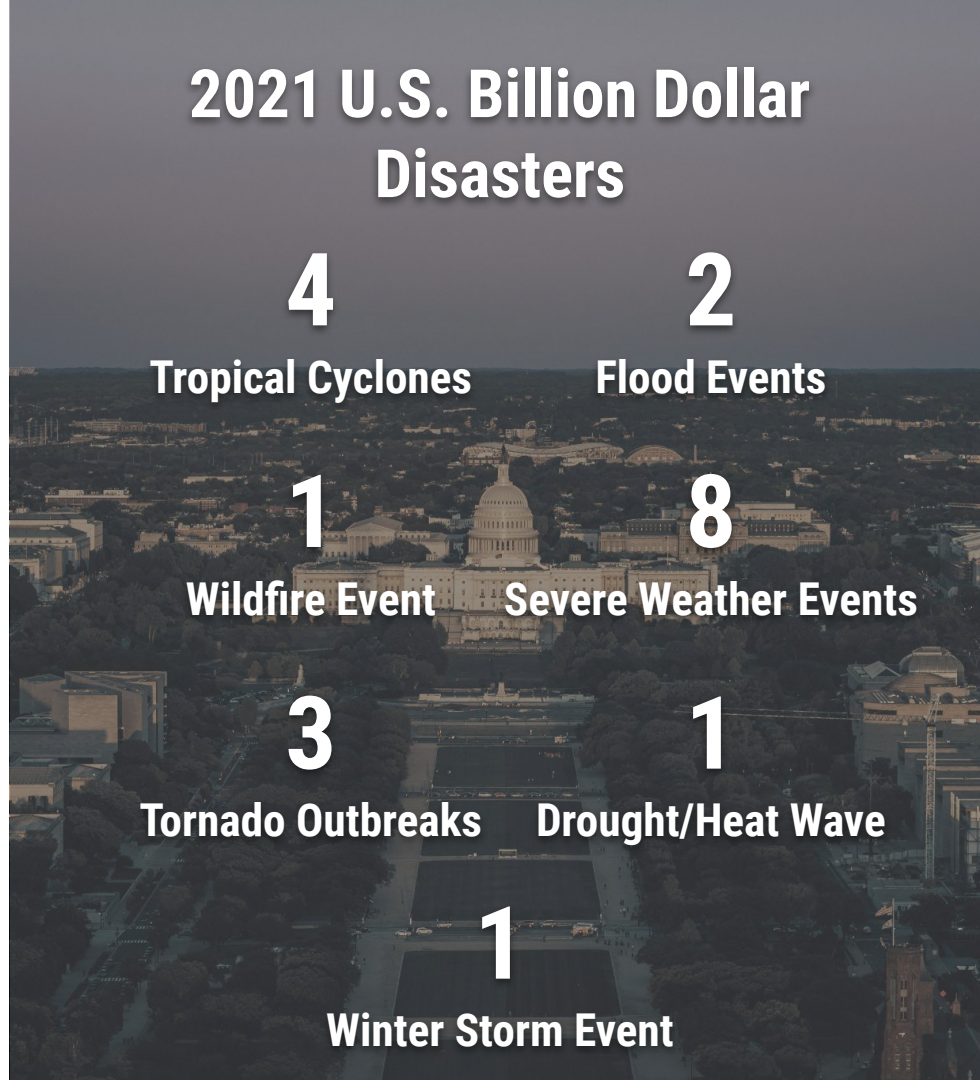
Tornado Outbreaks

1

Drought/Heat Wave

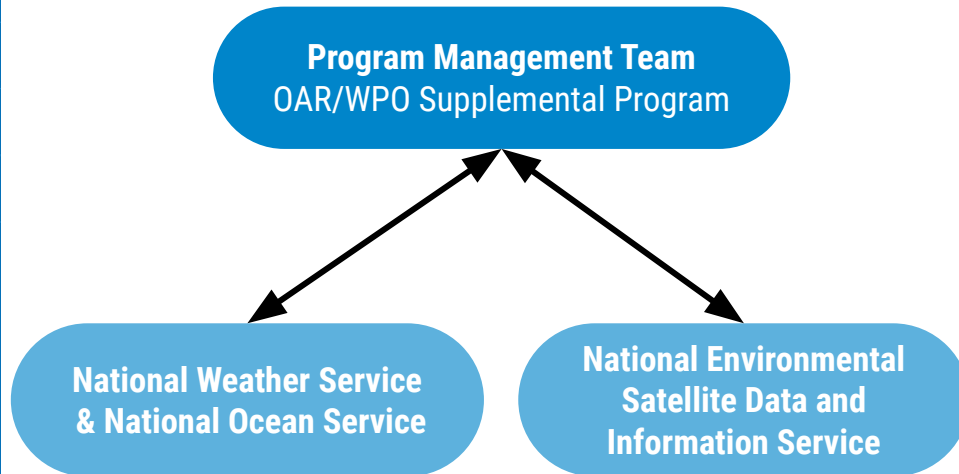
1

Winter Storm Event



EVOLUTION OF THE SUPPLEMENTAL APPROPRIATIONS PROGRAM

Working with NWS, NOS, and NESDIS, WPO leads the organization of quarterly reporting. Program management by WPO has become the standard for other quarterly reporting programs. Communication across Line Offices has evolved over the last 5 years.



Management Implementation Structure



SUPPLEMENTAL APPROPRIATIONS - 5-YEAR HIGHLIGHTS

FY18 Supplemental Program



FY22 Supplemental Program

**Improving Forecasting
and Assimilation
Portfolio (FY18)**

27 Total Projects

\$1.5M dedicated to
Social Science research,
to accelerate effective
risk communications of
warnings

Focus Areas

Weather Forecasting,
Floods, Hurricanes, &
Data Assimilation

\$50 Million

Across 4 Focus Areas

Focus Areas

Expanded to include
Wildfires, Extreme
Precip. & Social Science

\$170 Million

Across 7 Focus Areas

Program Growth

Management of 4
Supplementals, including
the Bipartisan
Infrastructure Law (BIL)

76 Total Projects

\$40M of BIL funding for
NOAA's Service Delivery /
Social, Behavioral, and
Economic Sciences

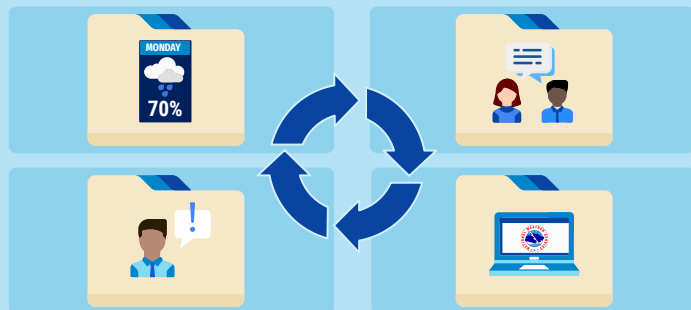
SUPPLEMENTAL APPROPRIATIONS FOR SOCIAL SCIENCE & SERVICE DELIVERY

FY18 Disaster Supplemental

\$1.5M

Tropical Cyclones

*Accelerating Effective Risk
Communication of Warnings*



Disaster Relief Act of 2022

\$2M

Extreme Precipitation

*Using Social Science Methods
to Co-Develop Precipitation
Products & Services*



Bipartisan Infrastructure Law (BIL)

\$1.5M

**Fire Weather
Infrastructure**

~\$10M

**Societal Data
Insights Initiative**



SOCIAL SCIENCE PROGRAM

Our Challenge

Recent societal impacts from hurricanes, floods, wildfires, and other weather hazards shows a great need to understand the intersection of people and meteorology.

Our Mission

The Social Science Program funds research that plays a critical role in connecting the improvements of NOAA's weather forecast information to the publics' growing forecast needs.

Our Focus Areas

- Social Science Data & Research
- Research to Applications (R2X)
- Portfolio Analysis & Evaluation





WPO SOCIAL SCIENCE PROGRAM - 5 YEAR HIGHLIGHTS

FY17–19

Wx Act

Social Science mentioned throughout Weather Act Implementation Plans.

FY18 HSupp

Partnered with NWS & AOML to focus on tropical risk communication.

2019 SBES R20 Workshop

Goal of workshop was to understand the unique roles and capacities of people and organizations in the SBES & weather communities.

Gathered feedback from the SBS and weather community partners to identify ways to better integrate SBS research into operations.

FY20–22

Increased Demand

Various reports and policy documents call for more social science research.

NSF & NHC

Partnered to encourage SBES data & instrument publication.

Social Science Featured in Strategic Plans

OAR Strategic Plan
2020–2026

NOAA R&D Vision Areas

NOAA Strategic Plan
FY22–FY26

TO BE SUCCESSFUL, OUR SBES INITIATIVES NEED CROSS-SECTOR PARTNERSHIPS

Ongoing & Past Partnerships



Partnerships for Future Initiatives



Fire Weather Infrastructure

NOAA
*Global
Systems
Laboratory*



Societal Data Insights Initiative

*Private
Sector
Companies*





A STRATEGY FOR THE FUTURE

At the intersection of the Weather Enterprise*, WPO will use its new strategic plan to bolster our role within the weather research network. Over the next 5 years, WPO will be increasingly intentional about driving policy initiatives and building partnerships, as we strive to advance innovative weather research.



*Comprised of academia, public sector, industry, and non-profit sectors

WEATHER PROGRAM OFFICE STRATEGIC PLAN

Fiscal Years 2022–2026



1

Foster a collaborative weather research and development network with academic, governmental, and industry partners.

The Weather Program Office is situated within the Office of Oceanic and Atmospheric Research of the National Oceanic and Administration under the Department of Commerce.



NOAA
WEATHER
PROGRAM OFFICE

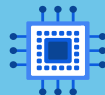


POLICY ON THE HORIZON

As we move forward, policy and legislation on the horizon will continue to serve as foundational to WPO's overall strategic vision and programmatic activities. The following are several pieces of legislation we are closely monitoring for their potential impact on WPO:

BIL

*Bipartisan
Infrastructure Law*



IRA

*Inflation
Reduction Act*



LEGENDS Act of 2021

*Learning Excellence and
Good Examples from New
Developers Act of 2021*

Weather Act 3.0

*The Weather Research
and Forecasting
Innovation Act*

FLOODS Act

*The Flood Level
Observation, Operations,
and Decision Support Act*



UPCOMING PRESENTATIONS

Activity Area 4: Effective Communication and Coordination of Weather Research

Supplemental Appropriations

*Mark Vincent, Ben Woods,
Chris Spells, & Renee
Richardson*



20 Minutes

Social Science Program

Gina Eosco



20 Minutes

Policy, Comms & Partnerships

Tamara Battle



20 Minutes

Q&A Session



11:15–12:30pm



NOAA
WEATHER
PROGRAM OFFICE

THANK YOU



wpo.noaa.gov



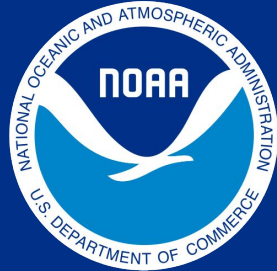
[@NOAA_WPO](https://twitter.com/NOAA_WPO)



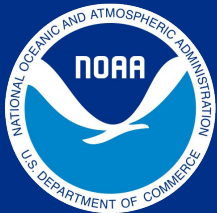
CREDITS: This presentation template was created
by Slidesgo, including icons by Flaticon, and
infographics & images by Freepik.

Photo by Tech. Sgt. Oscar
Sanchez (Air Force)

Department of Commerce // National Oceanic and Atmospheric Administration



NOAA
WEATHER
PROGRAM OFFICE



NOAA
WEATHER
PROGRAM OFFICE

January 27, 2023

Supplemental Appropriations Program

Dr. Mark Vincent, Supplemental Program Manager

Ben Woods, Supplemental Program Lead

Dr. Chris Spells, Bipartisan Infrastructure Law (BIL) Lead

Renee (Richardson) Keller, Program Coordinator

Activity Area 4: Effective Communication and Coordination of Weather Research



OUR TEAM



**Dr. Mark
Vincent**
Supplemental
Program Manager



Ben Woods
Supplemental
Program Lead



**Dr. Christopher
Spells**
BIL Lead



**Renee
(Richardson)
Keller**
Program Coordinator





Program Scope

SUPPLEMENTAL APPROPRIATIONS PROGRAM

Mission:

We provide end-to-end coordination and facilitation of congressionally directed research activities intended to improve forecasting and prediction capabilities, in response to significant weather events and natural disasters.

CATALYSTS

2017

Hurricane Harvey
Hurricane Maria
Hurricane Irma

2018

Hurricane Florence
Hurricane Michael
Typhoon Yutu

2019

Wildfires

2020

Hurricanes
Wildfires

2021

Hurricanes
Wildfires



SUPPLEMENTAL/BIL APPROPRIATIONS

CROSS-LINE OFFICE ROLES AND RESPONSIBILITIES



SUPPLEMENTAL APPROPRIATIONS PROGRAM BY THE NUMBERS



SUPPLEMENTAL APPROPRIATIONS PORTFOLIOS

The program coordinates **\$170 Million** in scientific investments across 4 portfolios.

FY18

Improving Forecasting
and Assimilation (IFAA)

Amount
\$50 Million

Duration
FY18 - 4 Years

Investment
27 projects

FY19

Improving Forecasting of
Hurricanes, Floods, and
Wildfires (IFHFW)

Amount
\$25 Million

Duration
FY19 - 3 Years

Investment
11 projects

FY22

Disaster Relief Supplemental
Appropriations Act of 2022
(DRSA)

Amount
\$55 Million

Duration
FY22 - 3 Years

Investment
28 projects

BIL

Bipartisan Infrastructure Law
Provision 3

Amount
\$40 Million

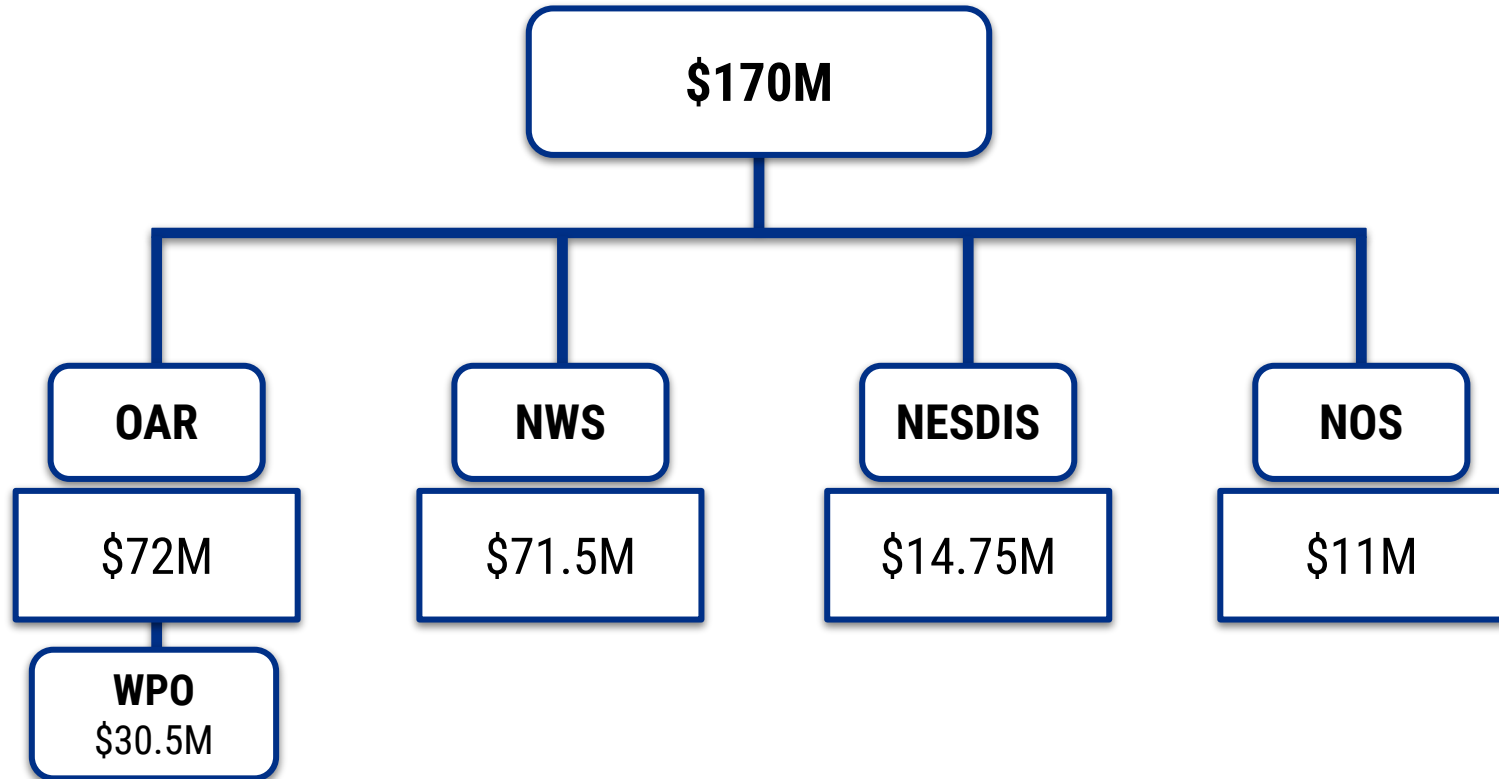
Duration
FY22 - 5 Years

Investment
10 projects

NOAA LINE OFFICE BREAKDOWN



The financial management of the majority of the \$170M in appropriated funds spans across four NOAA Line Offices: OAR, NWS, NESDIS, and NOS.





Program Implementation

SUPPLEMENTAL APPROPRIATIONS

WPO TEAM: MANAGEMENT LEAD

The Supplemental Appropriations Program team within WPO leads the coordination, monitoring, reporting, and communications of the Supplemental Appropriations.

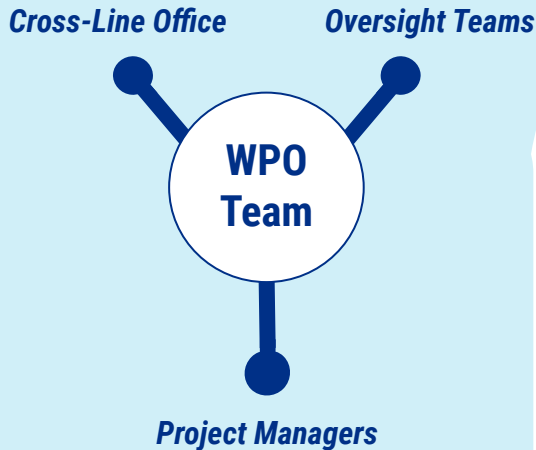


SUPPLEMENTAL APPROPRIATIONS

WPO TEAM: MANAGEMENT LEAD

Program Team Duties Within WPO:

Coordination



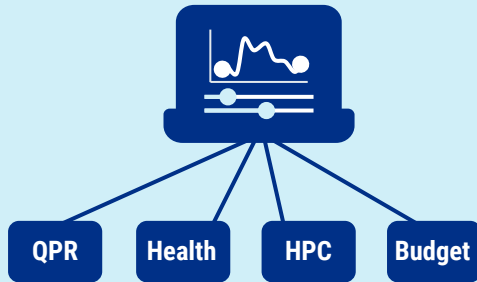
- Develop templates and manage core documents (Project Plans, Progress Reports)
- Communicate budget guidance and constraints to Project Managers
- Facilitate weekly meetings with budget, program, and Executive staff

SUPPLEMENTAL APPROPRIATIONS

WPO TEAM: MANAGEMENT LEAD

Program Team Duties Within WPO:

Monitoring



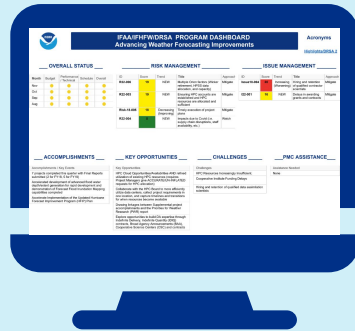
- Conduct Quarterly Project Reviews
- Monitor status of budget execution
- Monitor HPC requirements vs. capacity
- Monitor status and threats to completion of project milestones

SUPPLEMENTAL APPROPRIATIONS

WPO TEAM: MANAGEMENT LEAD

Program Team Duties Within WPO:

Reporting



- Report Portfolio Status to NOAA Program Management Council on quarterly basis
- Report and track transitions
- Report, track, and mitigate program/project risk/issue register

SUPPLEMENTAL APPROPRIATIONS

WPO TEAM: MANAGEMENT LEAD

Program Team Duties Within WPO:

Communications



- Communicate Value to Stakeholders
- Communicate Results through ArcGIS StoryMaps
- Provide conduit for communication between Project Managers and Oversight Teams



Highlights

SUPPLEMENTAL APPROPRIATIONS COMMUNICATION



Congress



Stakeholders



Public

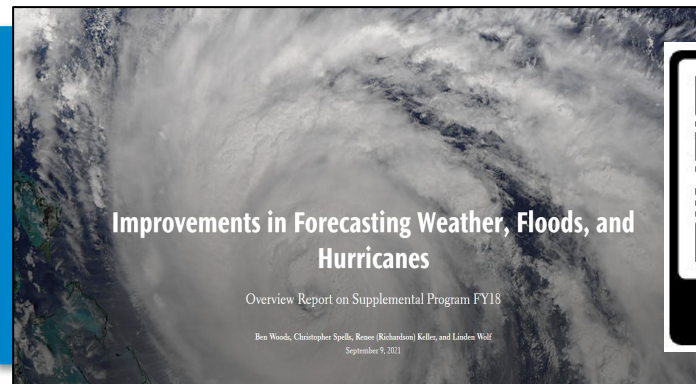
ArcGIS StoryMaps are used to communicate budget summaries, partner organizations, and research results and progress from each of the portfolio focus areas.



"...very impressed with the quality of the report, the information it conveys, and the success being generated."

Gary Matlock, Ph.D.

Deputy Assistant Administrator for Science for OAR



Improvements in Forecasting Weather, Floods, and Hurricanes

Overview Report on Supplemental Program FY18

Ben Woods, Christopher Spills, Renee (Richardson) Keller, and Lindsay Wolf
September 9, 2021



SCAN ME



Improving Forecasting of Hurricanes, Floods, and Wildfires

Overview Report on Supplemental Program FY-19

Ben Woods, Christopher Spills, Renee (Richardson) Keller, Lindsay Wolf
September 15, 2021



SCAN ME



SUPPLEMENTAL APPROPRIATIONS

DRSA STORYMAP

New!

Advancing Research in our Highest Weather Impacts

Fiscal Year 2022 Disaster Relief Supplemental Act

September 20, 2022

[Introduction](#) [Project Manager Highlights](#) [Transitions](#) [Partners](#)

Introduction

We are a weather-weary and weather-worn nation. The increase in hurricane, flood, and wildfire billion-dollar disasters remains unabated. Take just one example: flooding. In the summer of 2022, the U.S. endured severe and historic flooding from Yellowstone National Park to St. Louis, Missouri, and across the Midwest.



SCAN ME

The DRSA StoryMap is now publicly available and highlights the efforts to come with this portfolio.

Includes Model Operational Implementation, Transitions, Partner Organizations....and more!



[Introduction](#) [Project Manager Highlights](#) [Transitions](#) [Partners](#)

Project Manager Highlights

Avichal Mehra, PhD

Dr. Avichal Mehra is the Chief of the Dynamics and Coupled Modeling Group at National Weather Service's National Center for Environmental Prediction and Environmental Modeling Center (NWS/NCEP/EMC). He and his team have had a profound impact on hurricane research. For the HSUP portfolio, his project, "Accelerate re-Engineering of Hurricane Analysis and Forecasting System (HAFS)" resulted in hurricane model improvements that will be implemented into existing operational hurricane models in 2023. Avichal also contributed mightily to the DSUP portfolio with his project, "Advance Ocean Data Assimilation and Coupling of Air-Sea Models in the NOAA Unified Forecast System (UFS) in Support of Improved Flood and Inundation Forecasting Through Coordination with the National Weather Service and National Ocean Service." This project is enabling a comparison of ocean models and DA methods and future leveraging of research activities for improved coupled



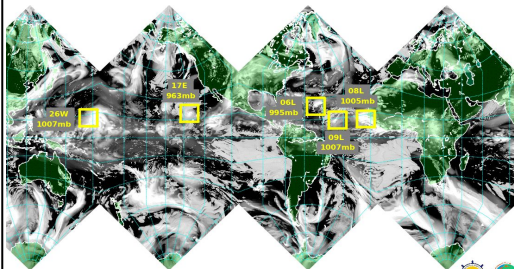
Avichal Mehra, PhD

SUPPLEMENTAL APPROPRIATIONS

PROJECT HIGHLIGHTS

HAFS

The Hurricane Analysis and Forecast System (HAFS) v1.0 operational implementation is on track for the 2023 hurricane season.

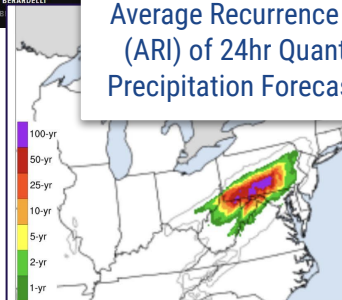


WPC

The Weather Prediction Center (WPC) Extreme Precipitation Monitor went operational on September 22, 2021.

Ida's remains threaten once-in-a-century flood event in Northeast

BY JEFF BERANDELLI
SEPTEMBER 22, 2021



Average Recurrence Interval (ARI) of 24hr Quantitative Precipitation Forecast (QPF)

FIM

Flood information over SW Florida was provided to FEMA the day after Hurricane Ian made landfall using techniques being advanced and developed to improve Flood Inundation Mapping (FIM).



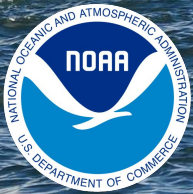


Path Forward

SUPPLEMENTAL APPROPRIATIONS PROGRAM

CHALLENGES / OPPORTUNITIES FOR EXCELLENCE / A LOOK FORWARD

CHALLENGES	OPPORTUNITIES
Budgets are large	Ensure outcomes to the American public
Expectations are high	Communicate results to key stakeholders
Lead time is short for new supplementals	Be agile and proactive
Numerous funding constraints	Educate and communicate
Scientists should do science	Implement efficient processes
Project dependencies are complex	Identify, monitor, and coordinate mitigation
More supplementals may come	How scalable is the gold standard established by the Program?



NOAA
WEATHER
PROGRAM OFFICE

THANK YOU



wpo.noaa.gov

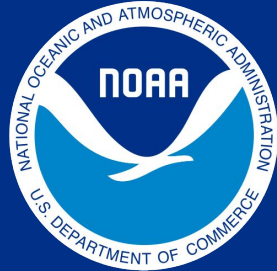


[@NOAA_WPO](https://twitter.com/NOAA_WPO)

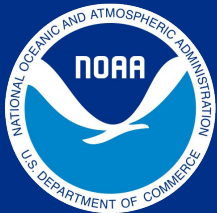


CREDITS: This presentation template was created
by Slidesgo, including icons by Flaticon, and
infographics & images by Freepik.

Department of Commerce // National Oceanic and Atmospheric Administration



NOAA
WEATHER
PROGRAM OFFICE



NOAA
WEATHER
PROGRAM OFFICE

January 27, 2023

Social Science Program

Dr. Gina Eosco, Social Science Program Manager

Activity Area 4: Effective Communication and Coordination of Weather Research





WHAT IS SOCIAL SCIENCE?

"Social science is the process of describing, explaining and predicting human behavior and institutional structures in interaction with their environments..."

-NOAA Science Advisory Board

Psychology

Communication

Economics

Geography

Anthropology

Sociology

And many others!





A BRIEF HISTORY OF THE WPO SOCIAL SCIENCE PROGRAM

FY17–FY19

2019 SBES R20 Workshop Findings

To measure impact and change, NOAA needs to build infrastructure for SBES data collection, management, and archival.

There is a growing need to streamline R2X transition processes, and a demand to understand how to transfer knowledge.

Staff of 2

The demand for social science exceeded capacity

\$1.5 Million

Secured FY18 hurricane supplemental funding

FY20–Present

FY20

WPO established the Social Science Program

~\$3 Million

Established average yearly program budget

Monumental Changes to the Program

Transformed workshop findings into strategic focus areas

Increased staff capacity

Received additional funds to advance focus areas



SOCIAL SCIENCE PROGRAM

Focus Areas

1



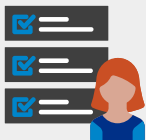
**Social Science
Data and
Research**

2



**Social Science
Research to
Applications (R2X)**

3



**Portfolio Analysis
& Evaluation**

Our Challenge

Recent societal impacts from hurricanes, floods, wildfires, and other weather hazards shows a great need to understand the intersection of people and meteorology.

Our Mission

The Social Science Program funds research that plays a critical role in connecting the improvements of NOAA's weather forecast information to the public's growing forecast needs.



THERE IS AN OPPORTUNITY TO BUILD OUT NOAA'S INFRASTRUCTURE FOR SBES DATA

1

Social Science
Data & Research

To measure NOAA's mission critical factors, such as impact and change, there is a need and an opportunity to build infrastructure for social science data collection, management, and archival, by supporting research activities that **prioritize the collection & archival of baseline, longitudinal, and event-based SBES data.**



Baseline Data

Data that provides a starting point for comparison purposes. Baseline information is a key component needed to measure change.



Longitudinal Data

Data collected for more than one time period, and sometimes involves collecting data from the same people to understand changes over time.



Event-Based Data

Perishable data that must be quickly gathered following a weather event. These data are often used as a validity check alongside other data.



PARTNERSHIP SPOTLIGHT - NATURAL HAZARDS CENTER



About NHC	The NHC at the University of Colorado Boulder is one of the nation’s oldest social science hazards & disaster research centers. It serves as the NSF-designated information clearinghouse for the societal dimensions of disasters.
Why Partner?	The NHC is the one academic center in the nation with the research and administrative infrastructure and the trust and recognition already established to support the collection of perishable, event-based data for NOAA.
Quick Response Program	Since the mid-1980s, the NHC has administered the Quick Response Research Grant Program. This program distributes funds to collect perishable data in the aftermath of extreme events to document disasters before memories fade.



WEATHER READY RESEARCH PROGRAM



Launched in 2020, this initiative continues to support the collection of **perishable, event-based data** that contributes to our understanding of how to prepare for and communicate extreme weather, water, and climate events.

- Call #1: All Weather Hazards
- Call #2: Data and Instrument Publication
- Call #3: Tornadoes (*Ongoing*)
- Call #4: Wildfires (*Ongoing*)

Future Opportunities with NHC:

New Call on Extreme
Rainfall & Flooding

Workshop on
Secondary Data Use

1

Social Science
Data & Research

26

Projects
Funded

17

Datasets
Published

16

Instruments
Published

235

Total
Downloads



TRANSFERRING SOCIAL SCIENCE KNOWLEDGE FROM HURRICANE SUPPLEMENTAL PROJECTS



Section 104 of the Weather Act provided NOAA with a unique opportunity to integrate social science into NOAA's tropical products, information, and services.



Four projects were developed with a complementary design, but still produced lengthy, individual reports that detailed the findings from each project.



NWS and WPO social scientists synthesized and translated findings across projects to develop actionable recommendations for NOAA research, development, & operations.

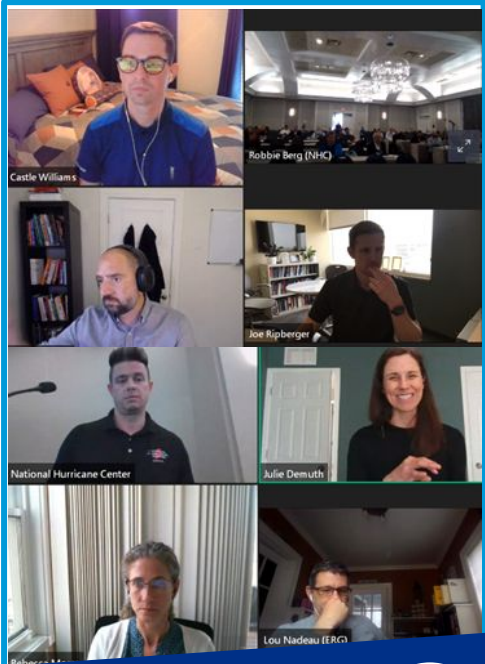




PARTNERSHIP SPOTLIGHT - NWS TROPICAL ROADMAP TEAM

2

Social Science
Research to
Applications



Tropical Roadmap Team



WPO PARTNERSHIP SPOTLIGHT

About The Team

The NWS Tropical Roadmap Team is made up of both policy-level meteorologists and operational meteorologists at the local and national scales and was created to **evaluate upcoming possible changes to NWS tropical products and services, as well as NWS policy.**

Why Partner?

Collaborating alongside the Tropical Roadmap Team has created several unique opportunities to share and iterate on social science project findings with operational and policy-level meteorologists **to accelerate the R2X process.**

The Tropical Roadmap

The Tropical Roadmap was developed to direct the strategic vision of the NWS Tropical Program over the next 10 years. The expected outcome is to produce a suite of **highly accurate, scientifically validated tropical products and services that are relevant to partners and publics.**



USING OUR R2X PROCESS FOR FUTURE ACTIVITIES & SUPPLEMENTALS

2

Social Science
Research to
Applications

Using a Cohort Approach

Instead of managing projects individually, we treated our principal investigators as a cohort. This approach allowed us to consider project findings as a collective body of research and acted a virtual space for social science researchers to have a sense of community.



A suite of research is often needed to influence a transition.



PIs confided in one another & shared research instruments

Upcoming Supplemental Efforts



Extreme Precipitation Products

*Nurture Nature
Center*



Fire Weather Testbed Product Codevelopment

*Global Systems
Laboratory*

PORTFOLIO ANALYSIS & EVALUATION

Measuring and evaluating the Social Science Program's evolving research and development (R&D) portfolio, its progress, and impact.

**How do we know
we've made a
difference or an
impact?**

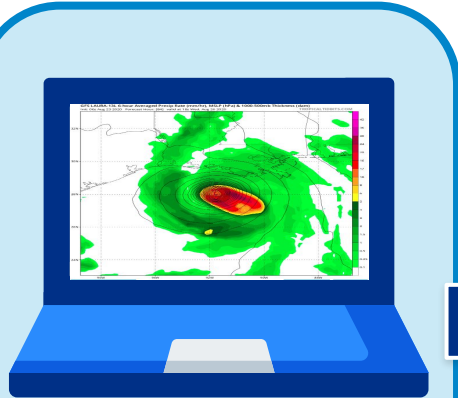




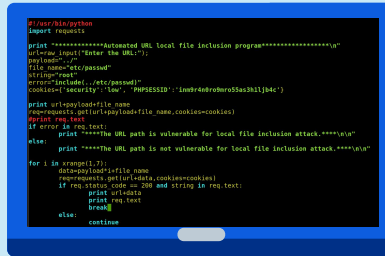
HOW DO OUR PHYSICAL SCIENCE COUNTERPARTS KNOW THEY HAVE MADE A DIFFERENCE?

3

Portfolio Analysis
& Evaluation



**New Model
Algorithm**



**Analyze Past
Weather Data**



**Improvement!
Success!**

*Please note: This is an **oversimplified example** for the purposes of providing a connection between what would similarly be needed to evaluate success for social science metrics.*



THE FUTURE OF SOCIAL DATA ANALYSIS IN NOAA: THE SOCIETAL DATA INSIGHTS INITIATIVE

3

Portfolio Analysis
& Evaluation

This *OneNOAA Initiative*, led by WPO, will take a first step toward developing a social science data infrastructure that will significantly enhance NOAA's capabilities to **integrate and synthesize social and meteorological data** and provide user insights to evaluate societal responses to products and services.



Use for Economic or Product Evaluation

Use multiple datasets (e.g., retail, traffic, & WxSociety data) to assess the impact of new products and services before and after implementation.



Combine social **data** from a variety of sources (including weather data).



Develop a data integration environment to **access, analyze, and explore** SBES data.



Design a dynamic **website** to view and share societal insights.



ENGAGING INTERNAL AND EXTERNAL PARTNERS TO MODERNIZE THE USE OF SOCIAL DATA

3

Portfolio Analysis
& Evaluation

Internal Partner



National Center for Environmental Information

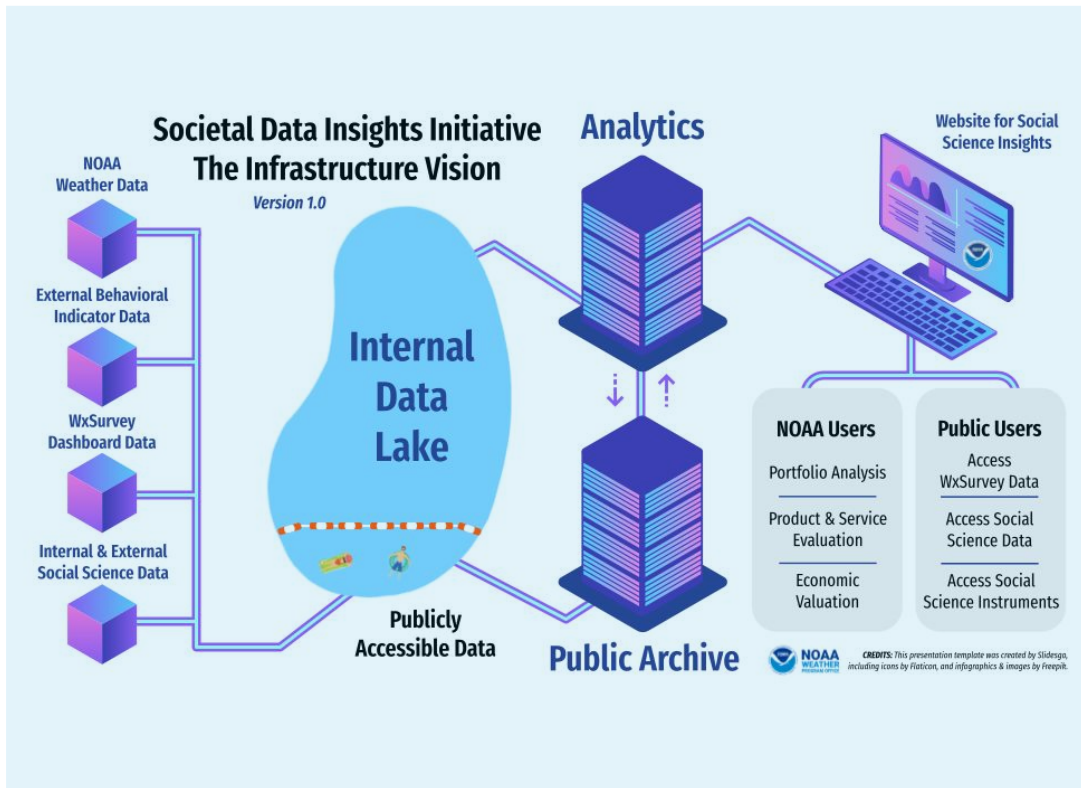
Explore new ways to integrate social science and meteorological data to enhance and evaluate products & services.

External Partner Possibilities



Amazon, Microsoft, or Google for Cloud Platform/Data

Use existing NOAA CRADAs to explore opportunities with cloud providers.





LOOKING FORWARD: FUTURE PROGRAM ACTIVITIES

The Social Science Program's focus areas and associated activities address critical short-term societal needs, while also building the broader infrastructure needed for social science integration at a larger scale.

Future Social Science Activities

Data & Research	<i>Select and fund new projects to support social science R&D</i>	<i>Communicate SBES data & instrument publication using strategic partnerships</i>
Research to Applications	<i>Transfer knowledge from the FY18 SBES Hurricane Supplemental projects</i>	<i>Refine the SBES R2X process using customer satisfaction feedback</i>
Portfolio Analysis & Evaluation	<i>Conduct NOAA stakeholder engagement activities on SBES data needs across NOAA to inform the development of the BIL Societal Data Insights Initiative</i>	

Thank You! Have Questions?

We Look Forward to the Live Q&A



**Dr. Gina
Eosco**

SSP Program
Manager



**Dr. Cassandra
Shivers-Williams**

SSP Deputy
Program
Manager



**Dr. Alison
Agather**

SSP
Competition
Lead



**Dr. Stephanie
Hoekstra**

SSP
VORTEX
Lead



**Dr. Jonathon
Mote**

SSP Data
Engagement
Lead



**Dr. Castle
Williamsberg**

SSP
R2X
Lead





NOAA
WEATHER
PROGRAM OFFICE

THANK YOU



wpo.noaa.gov



[@NOAA_WPO](https://twitter.com/NOAA_WPO)



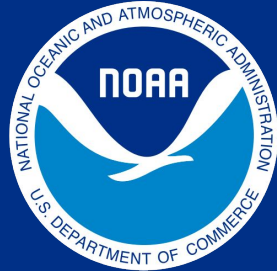
socialscience.wpo@noaa.gov



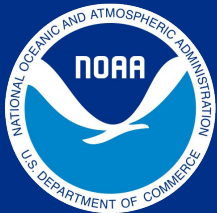
CREDITS: This presentation template was created by Slidesgo, including icons by Flaticon, and infographics & images by Freepik.

Photo by Gary Ellis on Unsplash

Department of Commerce // National Oceanic and Atmospheric Administration



NOAA
WEATHER
PROGRAM OFFICE



NOAA
WEATHER
PROGRAM OFFICE

January 27, 2023

Partnerships: The Way Forward

Tamara L. Battle, Policy & Partnerships Lead

Activity Area 4: Effective Communication and Coordination of Weather Research



EXCELLENCE IN PARTNERSHIP



Tamara L. Battle

Policy & Partnerships Lead and
PRT Strategic Visionary



Melissa Pratt-Zossoungbo

Administrative Officer and
PRT Design Extraordinaire



Dr. Alison Agather

FACETs Program Coordinator and
PRT Organizational and
Communications Guru





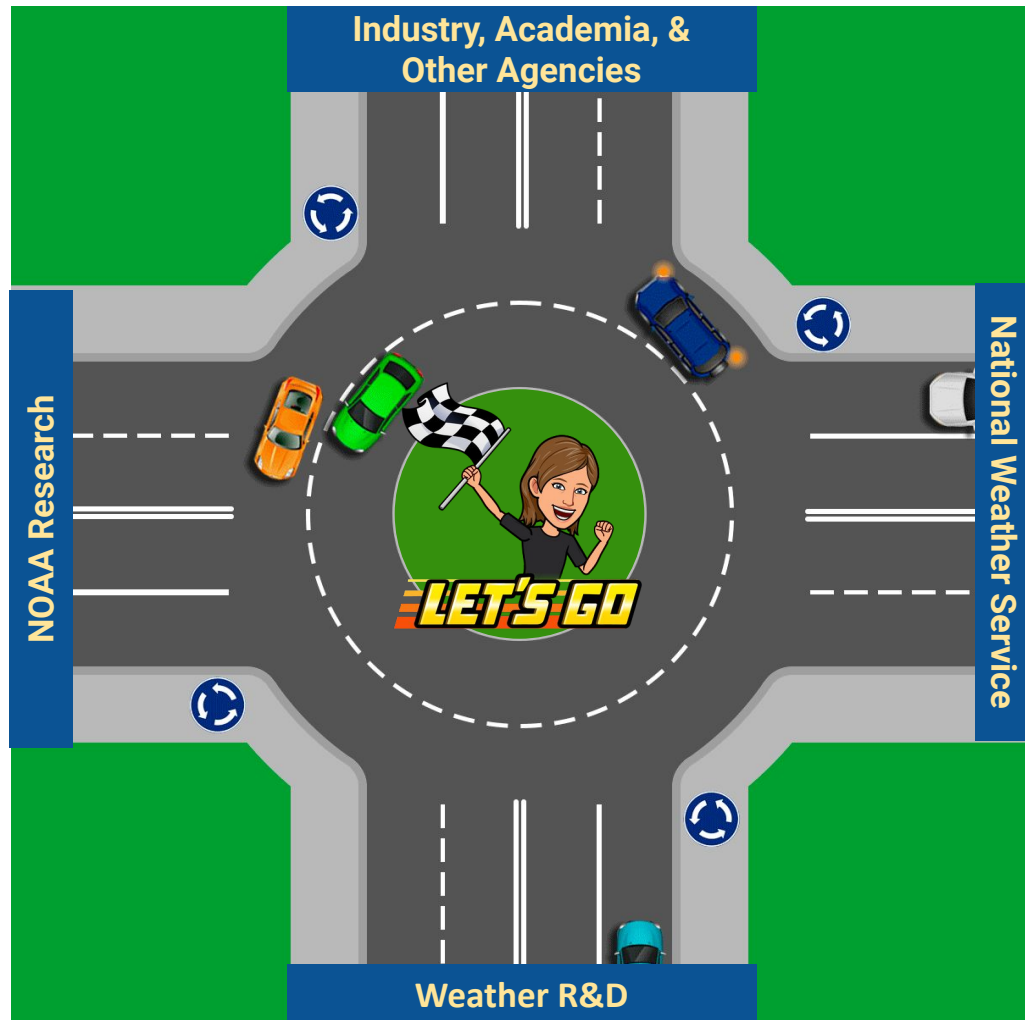
Retrospective



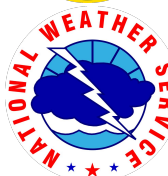
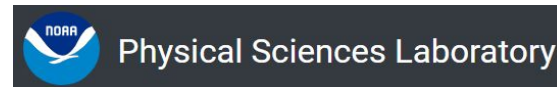
A UNIQUE ROLE

Policy, Partnerships, and Communication are the bedrock underpinning everything we do in the office. WPO facilitates R&D through partnerships with the Weather Enterprise, and shepherds that research through the transition process as an innovative leader.

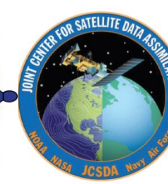
Centered at the hub of physical and social science R2O, WPO plays a key role in earth system modeling development, to improve and accelerate research and forecasting innovation towards a Weather-Ready and Climate-Ready Nation.



OUR PARTNERS



Air Resources Laboratory
Investigating processes in the
Earth's Boundary Layer



United States
Global Change
Research Program



NOTABLE ACCOMPLISHMENTS

Congressional Recognition

Wx Act, Reauthorizations,
Enacted Legislation

Interagency Cooperation

NSF, DoD, DOI,
NASA

Cross-agency Coordination

Partnership with NWS/STI
Supplemental Appropriations
Oversight

Improved Communication

Office Rebrand
Stakeholder Outreach
Showcasing Science





Prospective

FORGING INTO NEW TERRITORY

WPO is integral to achieving a Weather-Ready and Climate-Ready Nation, and will be guided by policy, partnerships, and communications to accomplish its mission.

Our commitment to leading and coordinating weather research was reinforced through the creation of a federal position focused on WPO reaching a broader audience, and discovering new collaborations and partners.

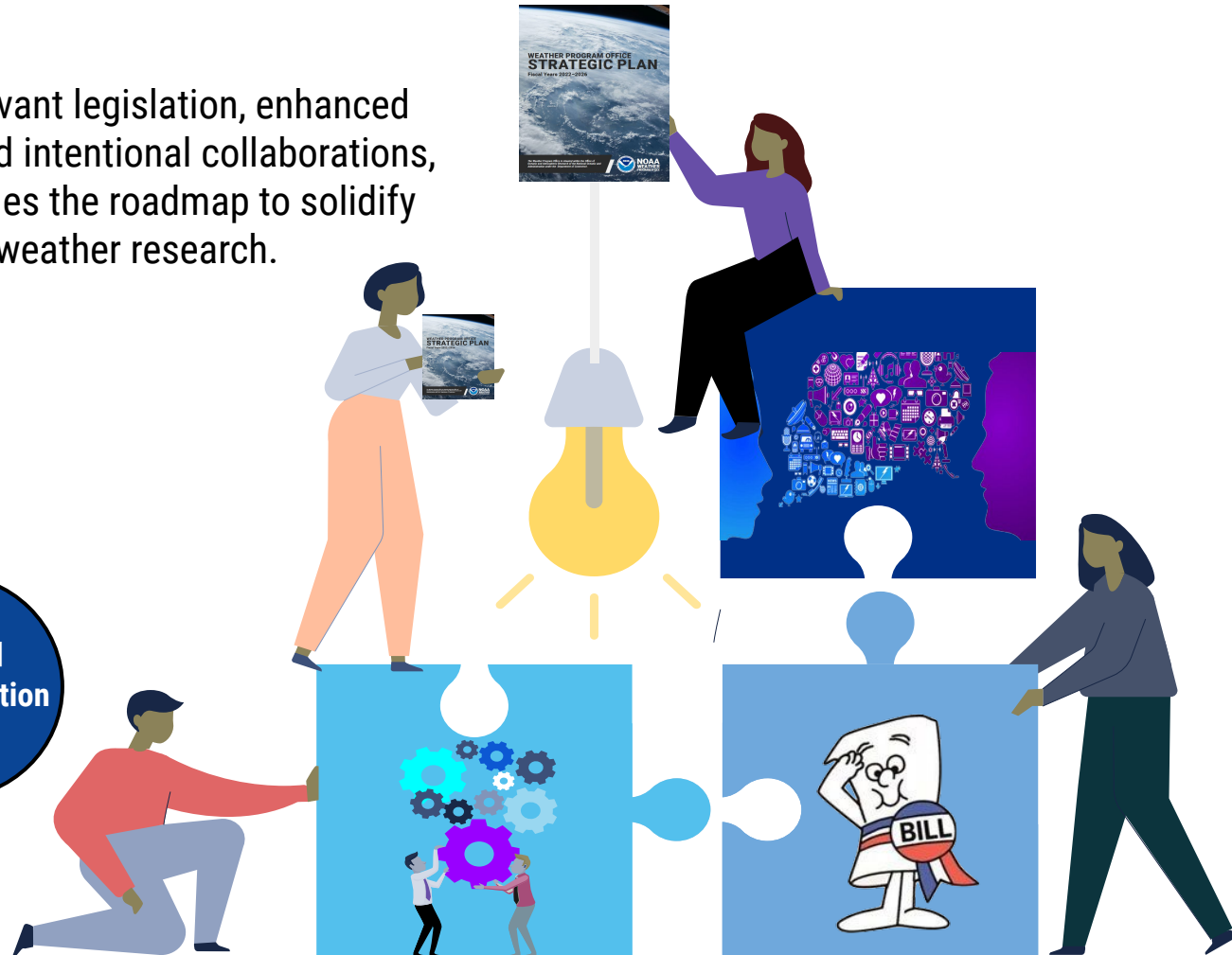


**Policy &
Partnerships Lead**

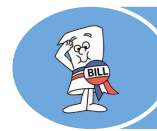


MOTIVATION

Guided by an infusion of relevant legislation, enhanced communications strategy and intentional collaborations, our new strategic plan provides the roadmap to solidify WPO's place at the nexus of weather research.



ON THE HORIZON



Policy & Legislation Support



PRECIP Act

Providing Research and Estimates of Changes in Precipitation Act



Weather Act 3.0

The Weather Research and Forecasting Innovation Act



FLOODS Act

Flood Level Observation, Operations, and Decision Support Act



LEGENDS Act of 2021

Learning Excellence and Good Examples from New Developers Act of 2021



IRA

Inflation Reduction Act



EVOLVING INITIATIVES



Strategic Partnerships

Minority Serving Institutions

Reaching HBCUs and other MSIs

Integrate and mentor new talent in the workforce

Expanding opportunities for non-atmospheric science majors

International Connections

World Meteorological Organization (WMO)

UK Met Office

ECMWF



Private Sector

CRADAs

Social Science Data Partnerships

Insurance/Risk Companies

NOAA

Other Line Offices

OAR Labs, Programs & CIs

WPO Student Education Strategy



SHARING OUR WORK



Engaged Communication

Forge better connections with forecasters and other partners to fully understand user needs

Continue to promote coordination and communication across OAR labs and between OAR & NWS

Embrace diversity, equity, inclusion and accessibility through communication activities.

Foster relationships and identify gaps across the Weather Enterprise





THE TIES THAT BIND

- Ensure alignment with the Weather Act and other guiding legislation
- Establish new collaborations with non-traditional partners
- Integrate social science into NOAA programs
- Provide equitable resources for Testbeds and reduce administrative burden
- Broaden Earth System Community Modeling under UFS and EPIC
- Expedite and improve transition processes and technology transfer
- Leverage our NOFO to support longer-term funding opportunities, while promoting innovative high/risk high/reward approaches
- Improve fire weather and atmospheric composition predictive capabilities
- Accelerate and advance observations and S2S research to support Earth System model performance
- Sustain mechanisms to develop the next generation workforce
- Expand DEIJA efforts for WPO and its partners



EXCELLENCE IN PLANNING AND PREPARATION: WPO PROGRAM REVIEW TEAM



Tamara L. Battle

Policy & Partnerships Lead and
PRT Strategic Visionary



Melissa Pratt-Zossoungbo

Administrative Officer and
PRT Design Extraordinaire



Dr. Alison Agather

FACETs Program Coordinator and
PRT Organizational and
Communications Guru

<https://wpo.noaa.gov/program-review/>

wpo.programreview@noaa.gov





NOAA
WEATHER
PROGRAM OFFICE

THANK YOU



wpo.noaa.gov

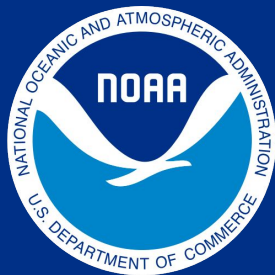


@NOAA_WPO



Department of Commerce // National Oceanic and Atmospheric Administration

THE END



**NOAA
WEATHER
PROGRAM OFFICE**





NOAA
WEATHER
PROGRAM OFFICE



Lunch