



NOAA
WEATHER
PROGRAM OFFICE

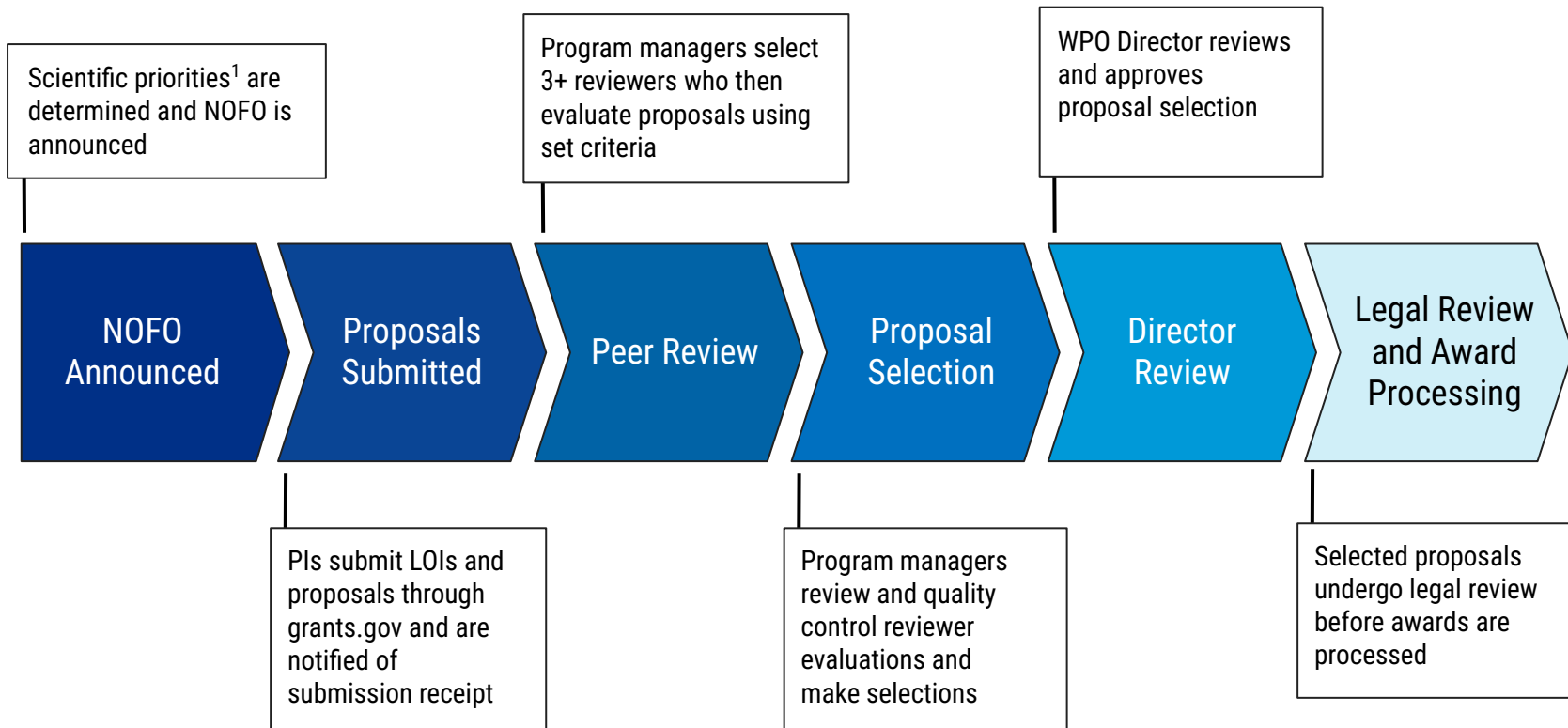
Notice of Funding Opportunity (NOFO) Application Process

A Guide to Understanding the Weather Program Office NOFO



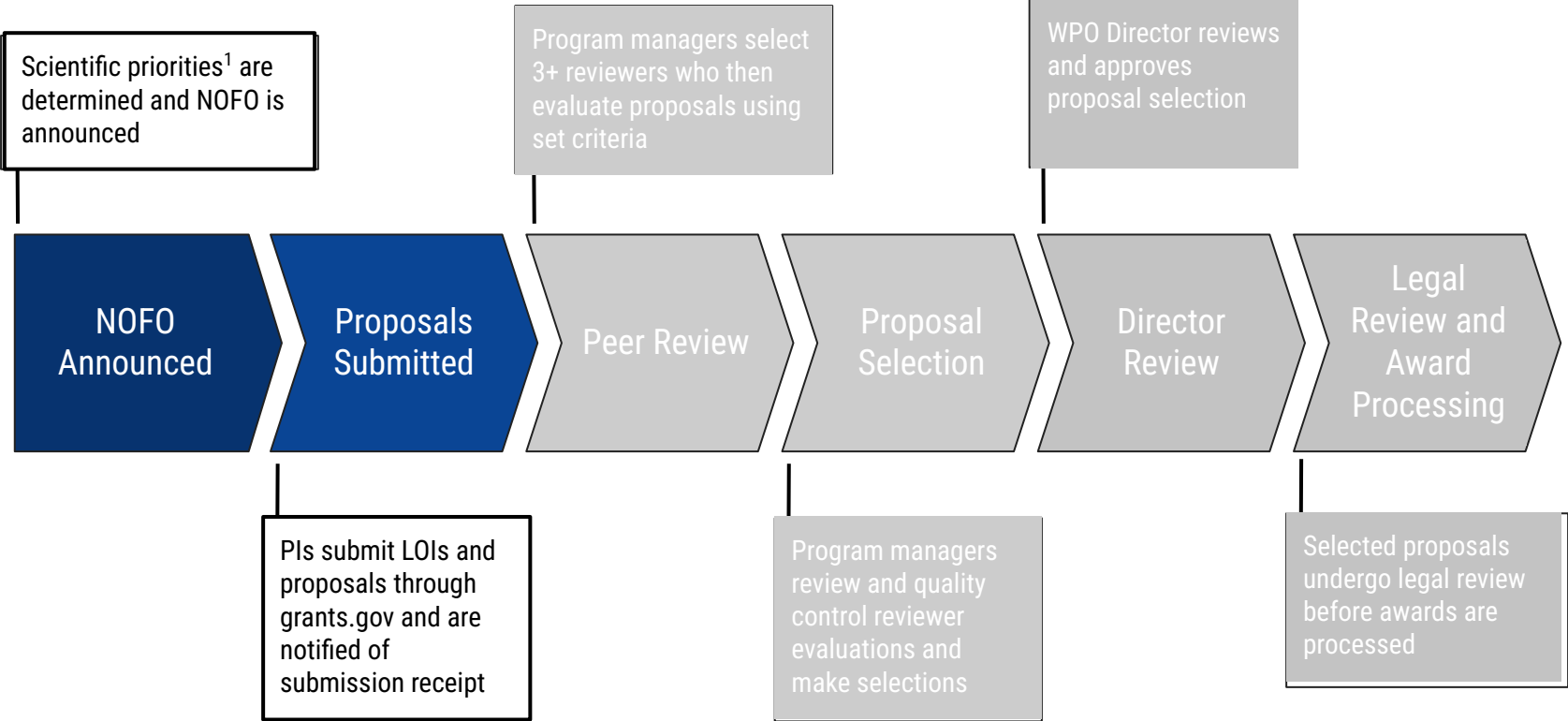
¹WPO program managers work with policy team, partners and stakeholders, and scientific community to develop scientific priorities for each competition within a NOFO.

WPO NOFO PROCESS SUMMARY





WPO NOFO APPLICATION PROCESS



NOFO RELEASE and INFORMATIONAL WEBINAR

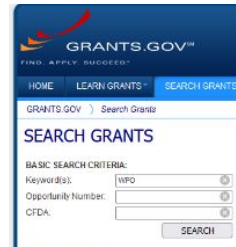
- Annual webinar hosted by WPO and the NOAA Central Library
 - Outlines available competitions
 - Provides specific deadlines and due dates
 - Facilitates Q&A with competition managers and NOFO administrators
- Webinar recording (with closed captioning) available through the NOAA Central Library YouTube Channel
- Additional Information about the annual competition available on the WPO website and at grants.gov



[NOAA Central Library](#)



[WPO Website](#)



[Grants.gov](#)





LETTERS OF INTENT (LOIs)

While not required, an effective Letter of Intent allows potential applicants to receive feedback on a proposal idea in order to develop a more competitive application.

- An LOI is a 2-page research summary that contains a basic project outline, budget, and description of potential applications and benefits.
- Reviewers will respond with a non-binding recommendation either encouraging or discouraging the applicant to proceed with a full proposal.
- Submit LOIs by September 19, 2023, 5:00pm via (<https://tinyurl.com/FY24WPOCompetition>) or email to oar.wpo.nofocompetition@noaa.gov





APPLICATION CONTENT

- ✓ Title Page; Plain-Language Abstract
- ✓ Compelling Research Plan
- ✓ Relevance to Competition Focus Area(s)
- ✓ Project Outcomes and Applications (i.e., R2X) and RLs
- ✓ Data Management Plan
- ✓ High-Performance Computing (HPC) requirements
- ✓ Project Budget
- ✓ PI and Co-PI Info (contact info, CVs, current and pending support, etc.)
- ✓ Outreach and Communication Plan



ELIGIBILITY CRITERIA FOR PIs



● Eligible

- U.S. Colleges, Universities, Institutions of Higher Education
- Cooperative Institutes
- U.S. based commercial organizations
- State, Local, Tribal governments within the U.S.
- U.S.- non-profit organizations

● Eligible (but must be partnered with one of the above)

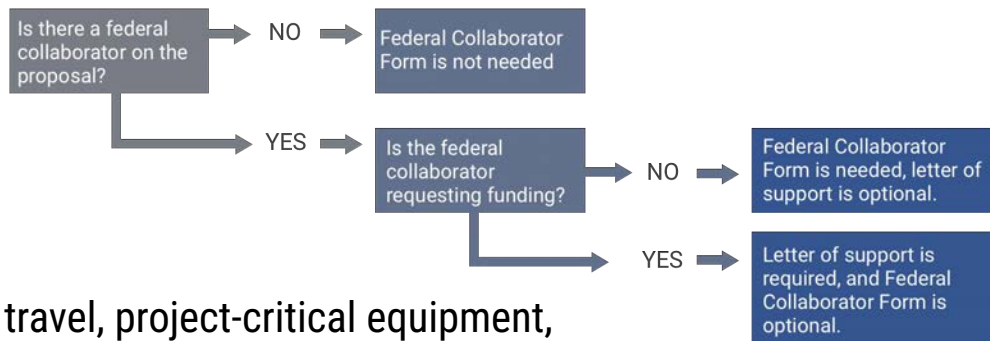
- NOAA Federal Institutions (Labs, Operational Centers, etc.)
- NOAA Federal Contractors

● Ineligible

- International (non-U.S. based) Institutions
- Non-NOAA Federal Institutions and Contractors

NOAA FEDERAL COLLABORATORS

Federal Collaborators Decision Chart



- Must partner with a lead PI from an eligible institution
- May not submit their own proposal
- May not request funding for salaries
 - **Allowed:** Critical, project-dependent travel, project-critical equipment, overhead/indirect costs for affiliate institutions, infrastructure/testbed-related costs
 - **NOT Allowed:** Federal employee or Federal contractor salaries, conference/workshop travel, any other direct funding
- NOAA Federal contractors are considered as NOAA Federal employees
- Unfunded Federal collaborators must provide a **Federal collaboration form** to document their intended involvement
- Funded NOAA Federal collaborators must provide a **letter of support**
 - Proposed total budget (excluding overhead/indirect costs) may not exceed 20%



FEDERAL COLLABORATORS

High RL projects targeting federal operations are strongly encouraged to work with federal collaborators in order to increase the likelihood of operational transition.

Do's and Don'ts of Fed. Collaborator Use of Funds



- Critical, project-dependent travel
- Project-critical equipment
- Infrastructure/testbed-related costs
- Overhead/indirect costs for affiliate institutions



- Submit proposal for work
- Conference/workshop travel
- Any other direct funding
- Federal employee or federal contractor salaries

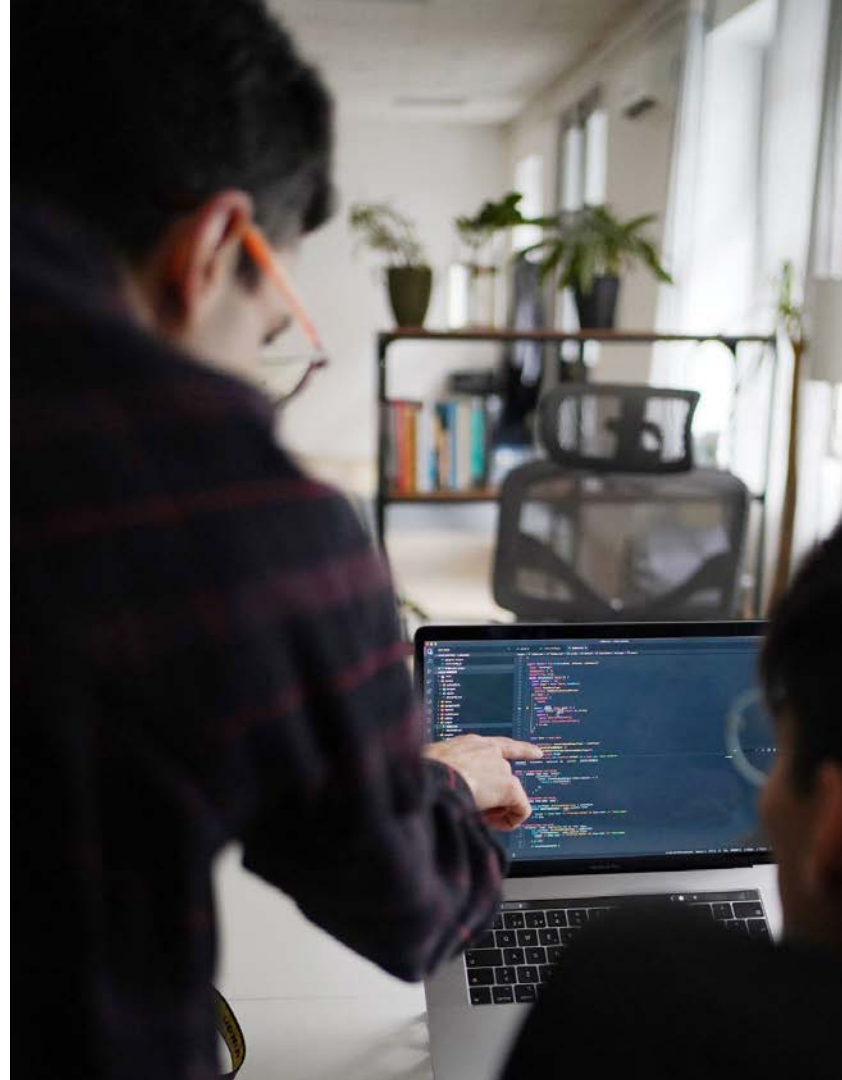




FEDERAL COLLABORATIONS AND TRANSITIONS

Research projects intending to transition to operations or other applications should involve consistent engagement with R&D partners, which is crucial to help identify, support, and transition world-class research.

- Competitions that fund high-RL work require collaborations with federal employees, increasing the likelihood of funded work transitioning into operations.
- Successful testbed projects will coordinate with testbed management and be relevant to operational partner needs.
- PIs with high RL projects (6 and above) are required to write transition plans with their federal collaborators within 6 months of the project start date.





IMPORTANT CONSIDERATIONS FOR PIs

- **Applying to multiple competitions is allowed**
 - ...but they must be different proposed projects
- **Identify and engage partners throughout the process**
 - Discuss your ideas with colleagues, former or current PIs, etc.
 - The ultimate goal is an eventual transition of research to apply the research findings
 - Touch base with the appropriate testbed or proving ground
- **Leave NOAA's operational transitions to the NWS - if NWS decides to adopt a product, the work to complete the transition is not covered by OAR**
- **Collecting data and information from human subjects**
 - Institutional Review Board (IRB): Mandatory requirements for all human subjects research.
 - Office of Management and Budget (OMB) / Paperwork Reduction Act (PRA) Process: Mandatory if NOAA assists in reaching out to/recruiting human subjects on your behalf.



AVOID COMMON MISTAKES

- **Not meeting minimum requirements**
 - Proposals that are late, incomplete, or not following guidelines will be rejected without review
- **Applying to an inappropriate competition**
 - Triple-check that the project aligns with the specific competition's science priorities
- **Not thinking about the “big picture”**
 - WPO's competitions focus on advancing research and enabling research transitions
 - Consider the end-user: what is the next step after the funding period ends?
- **Being overly vague or too narrowly focused**
 - Show that you have a refined R&D strategy and have considered possible risks
- **Unrealistic scope**
 - Do not “over-propose” - Are your research and transition goals realistic and achievable?
- **Ignoring deadlines or waiting until the last minute to apply**
 - How many applications will your institution have to process at the deadline?



NOAA WEATHER PROGRAM OFFICE

For information about the review process see the following presentations



Updated February 2025