

NOAA
WEATHER
PROGRAM OFFICE

Innovative Science Powering a Weather-Ready Nation

The Weather Program Office (WPO) funds research to improve weather forecasts, save lives, and reduce property damage. We work throughout the Weather Enterprise to foster research that can be transitioned into operations, knowledge, and other applications so the public can better be prepared for extreme weather.



Division Spotlight Observations and Research Support

The Observations and Research Support Division advances observations-related research throughout the Weather Enterprise, investing in observational technologies within NOAA, academia, and the private sector.

This division also provides research support functions for tracking, analyzing, and evaluating WPO's R&D investment portfolio, and provides project management, coordination, reporting, and communication capabilities for large, cross-NOAA programs.

This includes successfully guiding the transition of WPO's research investments into operations, commercialization, applications, or knowledge transfer. The Division also provides 360-degree coordination of projects funded by supplemental appropriations, critical to addressing the many billion-dollar weather and climate disasters that strike the U.S. annually.

WPO Divisions

Management and Administration

Observations and Research Support

Earth System research and Modeling

Science, Technology, and Society

The division also serves as the lead for **Goal 4** of WPO's Strategic Plan:

Strengthen the foundational infrastructure for next-generation weather research and transitions.

We Fund Research to Improve Your Weather Forecasts

Observations and Research Support Programs



Observations Program

A Cornerstone for Producing Quality Scientific Knowledge

Manages extramural grants, cooperative agreements, and interagency agreements to advance weather observations research into operations and applications.



Current Focus Areas

- Innovative Technologies
- Observational Capabilities Throughout the Weather Enterprise
- Guide to Transition

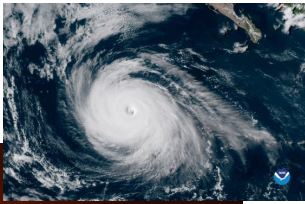
Current Focus Areas

- Hurricane Intensity Forecasts
- Flood Forecasting & Mitigation and Extreme Precipitation
- Wildfire Prediction, and Detection and Forecasting
- Data Assimilation to Improve Forecasting
- Service Delivery—SBES

Supplemental Appropriations Program

Provides coordination, oversight, reporting, and communication capabilities for weather-related projects associated with several major supplemental appropriations programs.

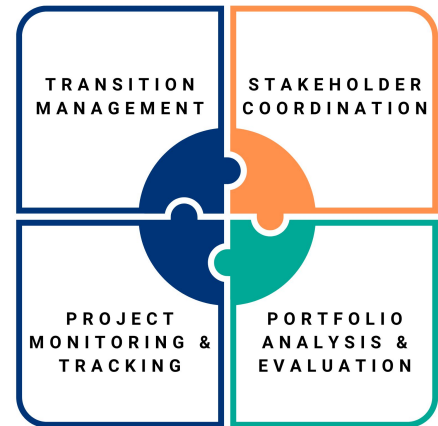
A supplemental appropriation occurs outside of the annual appropriation, and is intended to address urgent needs.



Services

Portfolio Analysis and Research Transitions (PART) Program

Streamlines research transitions by providing tailored support, office-wide project monitoring, and data-driven portfolio insights. As a liaison with NWS OSTI, it fosters coordination, addresses challenges, and drives decision-making while promoting open science to ensure WPO-funded research is accessible and beneficial for practitioners and the public.



WPO Project Management of PAR R&D
Acquisition will inform future NWS decision for radars from 2040–2090



Phased Array Radar (PAR)

Manages the scope, risks and issues, budget, and performance of the procurement of a Phased Array Radar to inform National Weather Service (NWS) next generation radar for the nation to improve the detection and forecasting of severe weather.